

ELITE JOURNEY PROGRAMME PROSPECTUS

2022-2023





DEVELOP SKILLS TO BECOME ROLE MODELS OF THE FUTURE



Our Mission

To provide quality, well-rounded education to students across the world, and to enable them to reach their full potential in the future.



Our Vision

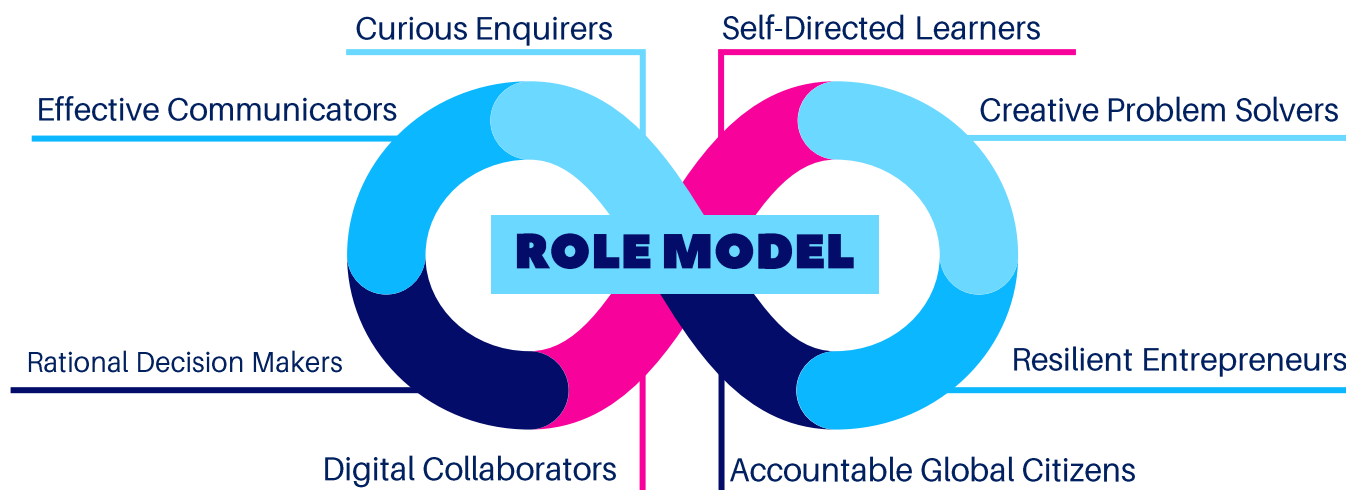
We endeavour to become a world leading international school of the future, cultivating accountable global citizens with the global competencies to make a better world.



Our Values

We want our students to be inspired by role models to become role models.

We believe that students success should be measured by more than their grade in exams, but their qualities as people. We want our students to become role models of the future. To do this, our programmes target 8 specific skills.





CURIOUS ENQUIRER

Nurture your curiosity and a love for learning. Think creatively and develop your skills for asking effective questions. Research efficiently and reliably using a range of approaches, from experimental investigations to searching the internet.



SELF-DIRECTED LEARNER

Set your own goals and pursue opportunities to achieve them. Reflect on previous experiences and learn from a variety of environments to grow as an individual. Find what motivates you and cultivate personal discipline.



CREATIVE PROBLEM SOLVER

Identify and understand problems, in education and real-world scenarios. Be able to draw on your past experiences and use critical thinking to evaluate issues and find solutions.



RESILIENT ENTREPRENEUR

Develop knowledge, confidence, and a proactive mindset to unlock your potential and succeed in the changing world of work. Explore new ideas and innovative strategies. Assess risks and be resilient in work and beyond.



ACCOUNTABLE GLOBAL CITIZEN

Relate and contribute to the local and global community through empathy, compassion, and cultural understanding.



DIGITAL COLLABORATOR

Take full advantage of the benefits of technology to achieve your objectives. Work virtually to collaborate with people across borders and time-zones. Keep up-to-date with digital trends to utilise the best tools available to you.



RATIONAL DECISION MAKER

Filter important information and make sensible, informed decisions based on the relevant data. Be resourceful and resilient in the face of new challenges and stressful situations, handling changes with agility.



EFFECTIVE COMMUNICATOR

Articulate your thoughts and intentions clearly using verbal, written, technological, and presentation skills in any context. Listen effectively to understand other people.



97%

of students rated our programmes **Good to Excellent.**

91%

of students Agree or Strongly Agree that after the programme they were about to state their own **ideas, values, and worldview**

93%

of students Agree or Strongly Agree that during the programme they learned to **respect** different ideas, values, beliefs, and points of views of others.

91%

of students Agree or Strongly Agree that after the programme, they were able to maintain a **conversation** with an English person.

WHAT ARE ELITE JOURNEY PROGRAMMES LIKE?

Our students know what Elite Journey feels like! The personality of our programmes aims to make all our classroom environments a place for valuable learning, that students find engaging, enjoyable, and comfortable.



Fun



Immersive



Interactive



Collaborative



PROGRAMMES FOR YOU, WHATEVER YOUR LEVEL

STARTERS

Suitable for students who are new to the topic.

Business
Entrepreneurs
of Tomorrow
Camp

A2

Time to Talk
Public
Speaking
Camp

A2

Leadership
Debate "Who
Will Rule"
Camp

B1

Debate Club
Extra
Curricular
Activity

B1

Suitable for students who want to improve, or
entry level for capable beginners.

STEAM
Indestructible
City Camp

B1

Public Speaking
Competition
Preparation Camp

B1

Debate
Competition
Preparation Camp

B1

IMPROVERS

MOVERS

Suitable for students that have sound fundamental
knowledge and practise in the topic.

Court Case
Debate Camp

B1

Public
Speaking
Competition

B1

STEAM
Competition

B1

Debate
Competition

B1

Suitable for students who are experienced in the
topic.

Business Farm-
To-Table Camp

B2

Sustainability
Model UN Debate
Camp

B1

FLYERS

ELITE JOURNEY PROGRAMME CATALOGUE



ENTREPRENEURS OF TOMORROW

Business

Camp

Starter

A2 English

This starter camp helps student to learn and practise key entrepreneurship concepts and life skills, such as project management, social awareness, and leadership. Student teams will design, make, and sell their own healthy beverage.

Through this project, students are exposed to the process of design thinking and effective teamwork, empowering students to solve a real-world problem by bringing their own ideas to life. The student project goes through concepts in a "Five P's": Problem, Product, People, Price, and Pitch.



TIME TO TALK

Speech

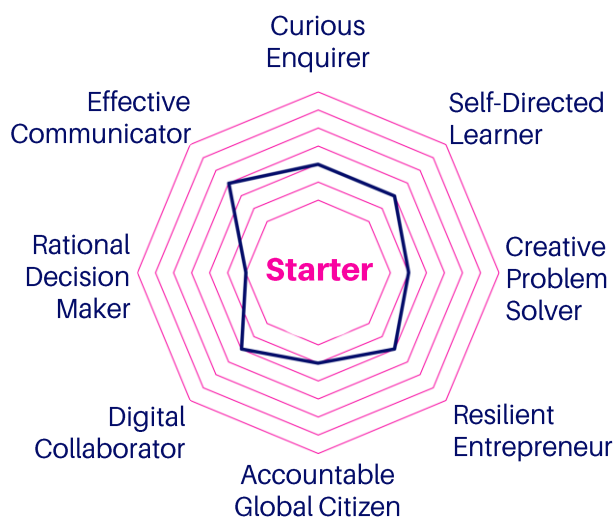
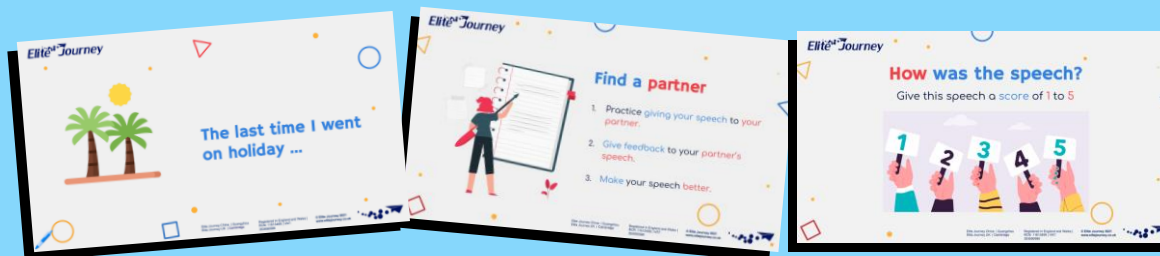
Camp

Starter

A2 English

This camp is designed to support students at the start of their public speaking journey. There is a focus on English Language fundamentals to support public speaking skills. Students will deliver speeches daily, getting personalised feedback leading up to the big finale where they will present a speech at the 'Teddy Talk Conference'.

Through fun public speaking games, workshops, and mentor guidance, students will develop their confidence, resilience, and communication skills.



LEADERSHIP "WHO WILL RULE?"

Debate

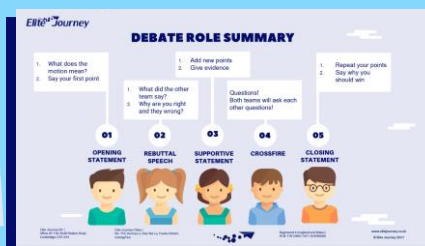
Camp

Starter

B1 English

This immersive camp aims to teach students about leadership, debate, and effective communication. Students will focus on training argumentation and problem solving skills as they compete to be elected as a leader at the end of the camp.

By preparing for and taking part in leadership debates, students improve their vocabulary, critical thinking, writing, and public speaking skills. Students will tackle real issues such as education, health, and the environment.



DEBATE CLUB

EXTRA CURRICULAR ACTIVITY

Debate

Extra
Curricular
Activity

Starter

B1 English

The Elite Journey Debate Club is a school extra curricular activity. The aim of the course is for students to be introduced to debating and grow their debate experience. We target students' curiosity through interesting debate motions that apply to students' lives or will approach global issues from new perspectives.

Students will first learn the fundamentals of debate and then advance their debating skills naturally alongside through 'do and review'. Feedback will especially help students to enhance their communication, critical thinking, and personal management.



Targeted Skill
Curious
Enquirer

BUILDING AN INDESTRUCTIBLE CITY

STEAM

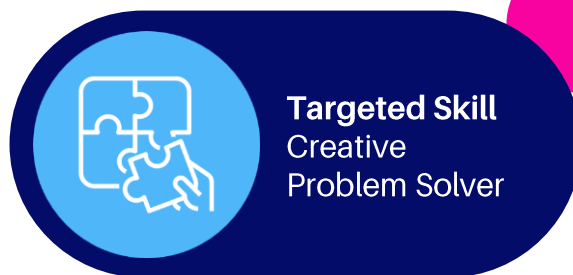
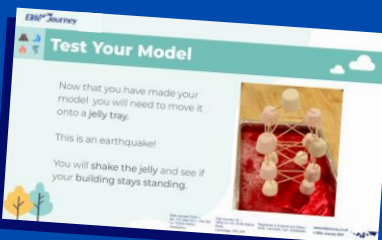
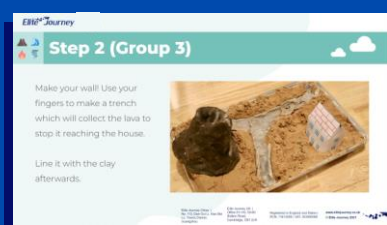
Camp

Improver

B1 English

The Indestructible City Camp ignites student's passion by allowing them to build their own city that will survive on the most dangerous island known to man. Each day, students learn about a natural disaster that will threaten their city before embarking on their engineering adventure to build something to protect the island.

At the end of the camp students will present their island to a panel of judges in a bid to be named 'The Indestructible City'. Through a daily challenges, students develop their problem solving, decision making, and communication skills.



PUBLIC SPEAKING COMPETITION PREPARATION



**Public
Speaking**

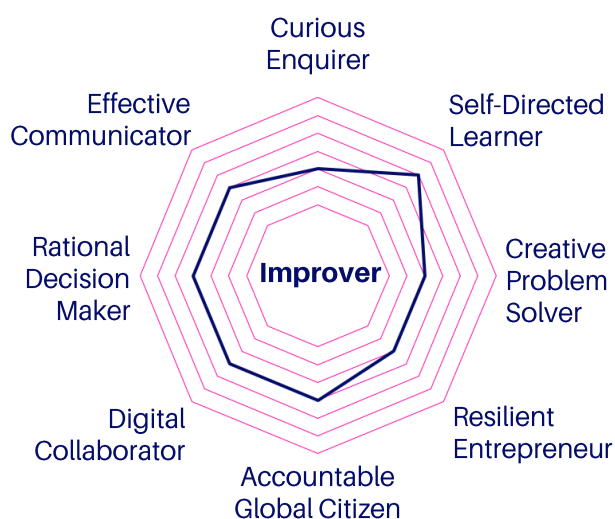
Camp

Improver

B1 English

This camp is helps students to excel in public speaking competitions by giving them practical and appliable knowledge to improving their speaking confidence, speech structures, and introspection skills.

Throughout the camp, students will track the global understanding theme of the EJ competition through practise speech topics like "What The World Can Learn from China and What China Can Learn from the World". This prepares students for the competition by expanding their global perspectives and giving them detailed feedback to learn from.



"BECOMING A DEBATE CHAMPION"

DEBATE COMPETITION PREPARATION

Debate

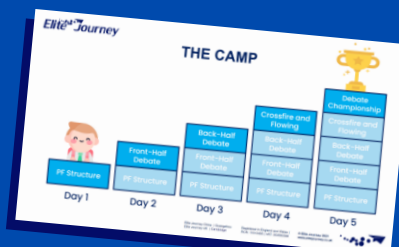
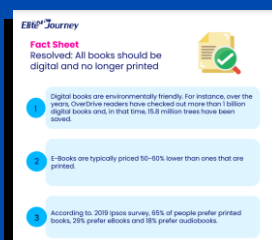
Camp

Improver

B1 English

The "Becoming a Debate Champion" camp is designed to allow students to learn and practise the strategies to get a competitive edge in debate competitions. This is done by honing skills such as communication, reasoning, and self-reflection.

Throughout the camp, students will track the global understanding theme of the EJ debate competition through practise motions like "The British should abolish their monarchy" and "Tanzanian farmers should kill lions that eat their livestock". This prepares students for the competition by expanding their global perspectives and giving them detailed feedback to learn from.



COURT CASE DEBATE CAMP

Debate

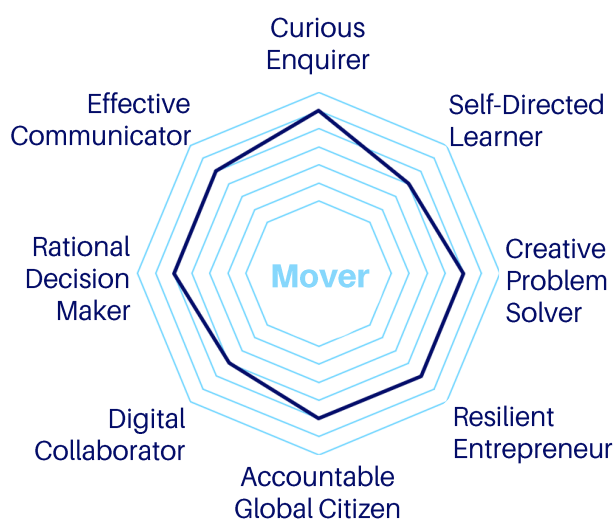
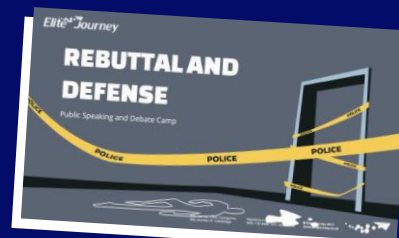
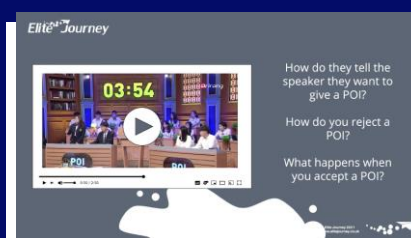
Camp

Mover

B2 English

A crime has taken place! Students are given details of the crime and must find evidence, develop speeches, practise debates, and finally go to trial. The aims of this course are to develop skills such as logical argumentation, improvisation, and confidence to perform. Within this, students will focus on the justice system, perspective, and bias.

As the camp goes on, students have the opportunity to create their own laws and refine their debate skills. Once they have built a case, groups come together to argue who is guilty.



PUBLIC SPEAKING COMPETITION

Public Speaking

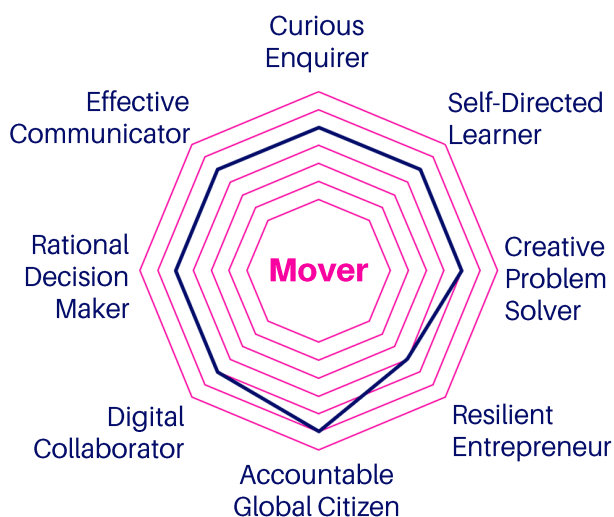
Competition

Mover

B1 English

The Public Speaking Competition aims to provide participants from diverse backgrounds a platform to express their ideas and showcase speech arts on a world stage. Over 1000 competitors have the chance to develop their creativity, communication, and presentation skills through different rounds like prepared speeches and impromptu speeches.

Over multiple stages, students share their personal voices on themes that resonate with the development trends of the world and innovative multi-culture inclusion.



STEAM COMPETITION

STEAM

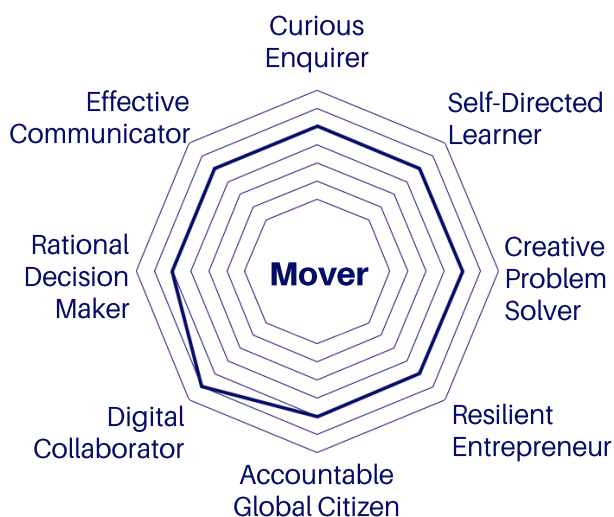
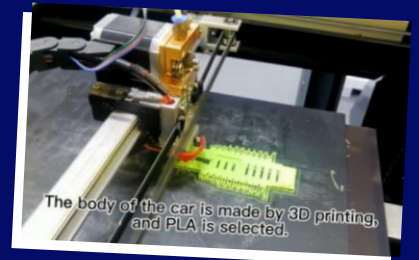
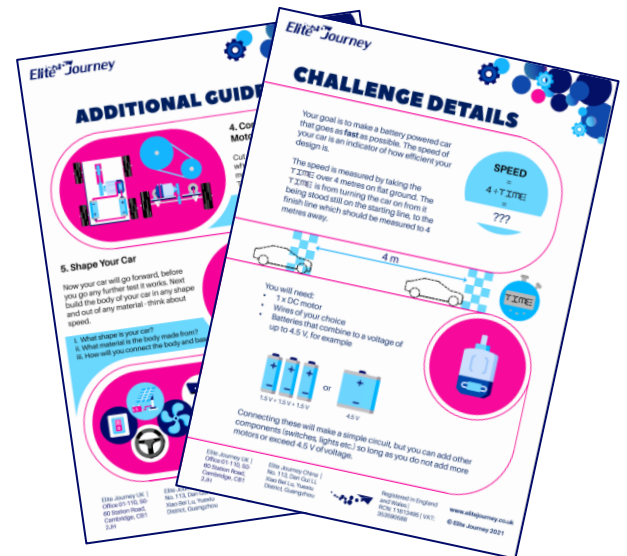
Competition

Mover

B1 English

The STEAM Competition is designed for students to apply their existing science knowledge and technical skills to a new problem, developing and securing existing knowledge. Meanwhile, there are opportunities to advance new abilities such as presentation skills and resourcefulness.

Students are given a project brief and work to create and present their ideas. They grow the necessary skills to excel in their mission and impress the judges. In the most recent STEAM competition, students designed and created fast, electric cars from sustainable materials.



DEBATE COMPETITION

Debate

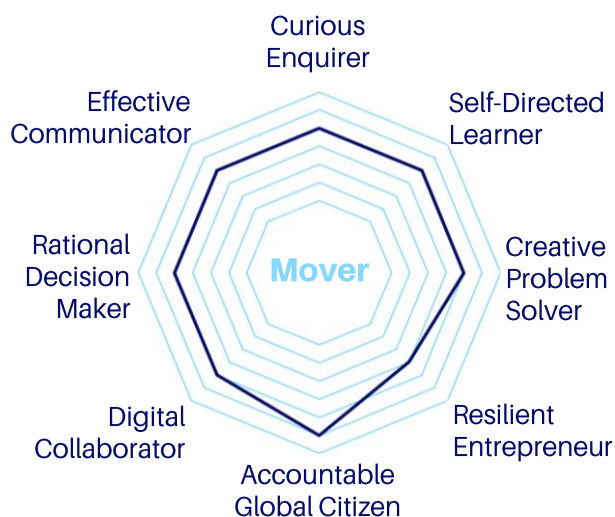
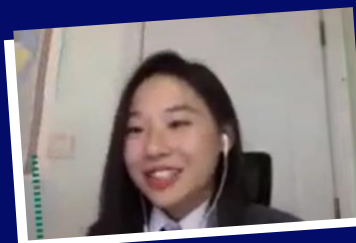
Competition

Mover

B1 English

Through the Elite Journey Debate Competition, students have the chance to showcase their debate talent, in a unique cultural exchange competition between students in Europe and China. Through the competition, over 1000 students across China and the rest of the world have the chance to hone and test their debate and related skills.

Students debate relevant, international topics chosen to bridge the globe and inspire the conversations of the next generation. Themes include the post-Covid world and sustainability.



Targeted Skill
Accountable
Global Citizen

SUSTAINABILITY MODEL UN DEBATE

Debate

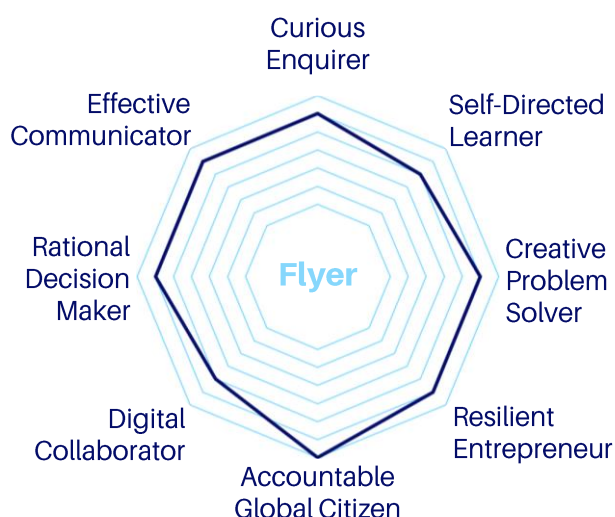
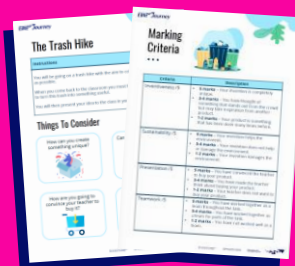
Camp

Flyer

B2 English

On this camp, Model UN debate is used to develop holistic skills, such as effective communication and teamwork. Each day, represent a different country and debate global policy from the perspective of their assigned country. This requires students to think from a new, international perspective.

The debates are themed around the UN Sustainable Development Goals (SDGs). Students learn about a sustainability issue and try to solve it. There are also projects in the afternoon to reinforce this sustainability learning.



FARM-TO-TABLE BUSINESS

Business

Camp

Flyer

B2 English

Students are immersed in the world of business through a business competition to set up a farm-to-table restaurant. Students help Farmer Tom save his farm by setting up a restaurant that uses farm produce.

This camp aims to create a fun, competitive scenario where students can drive soft-skill development, like collaboration, leadership, and confidence. Students will also improve their global awareness, thinking about ethics and sustainability.

